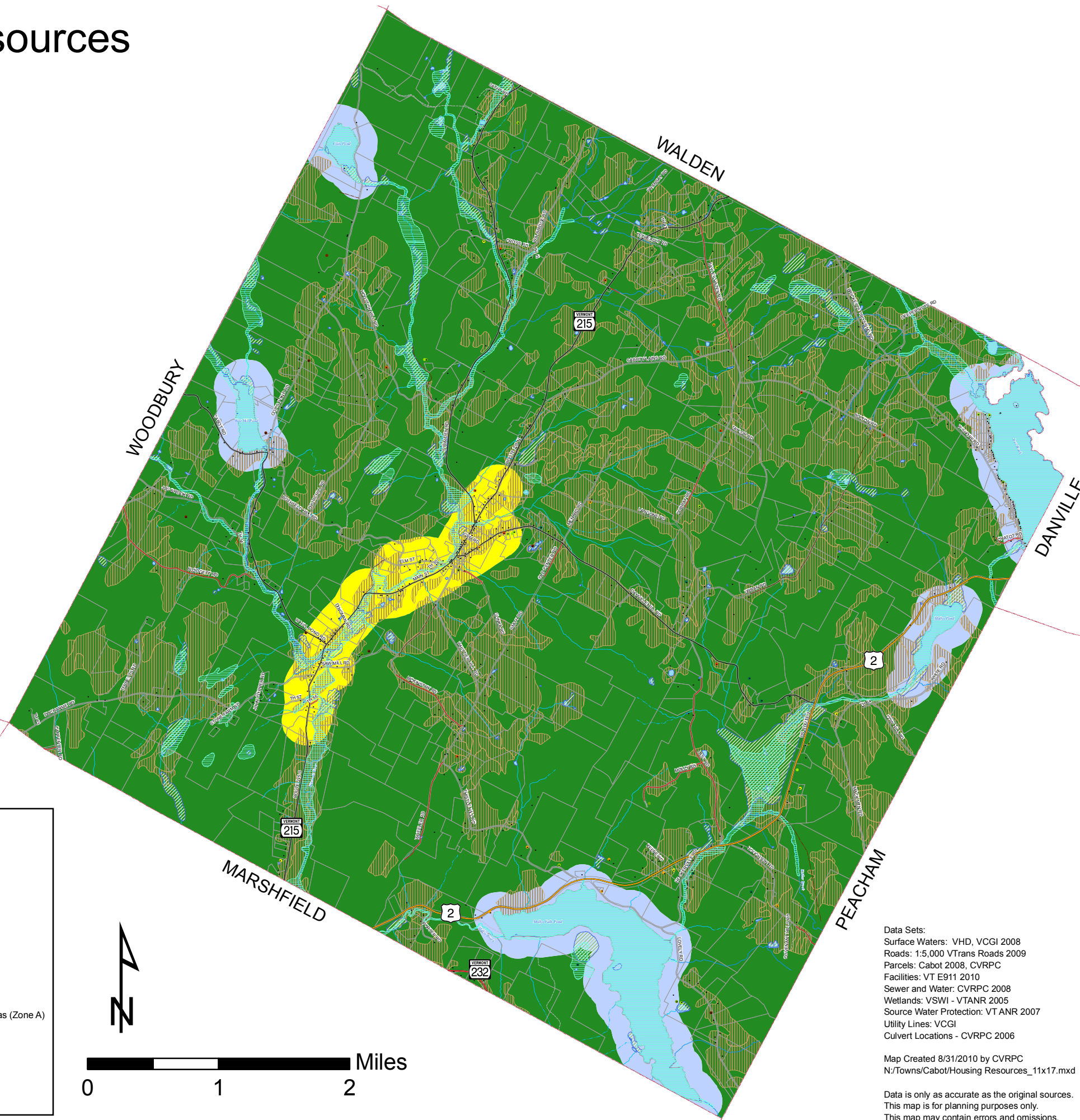


Map 4: Housing Resources

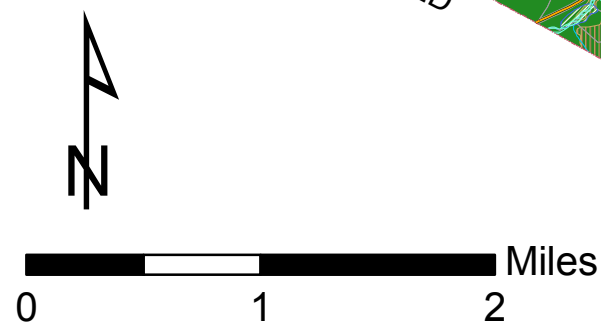


Cabot's projected future housing demand to the year 2020 is 64 units. Cabot has a goal of incorporating 65% (42 units) of the future housing demand into the Village Center District and 35% (22 units) in the Low Density Residential and Agricultural District.

Residential Housing by Year and Number of Units	
•	2003 - 10 Units
•	2004 - 16 Units
•	2005 - 15 Units
•	2006 - 6 Units
•	2007 - 10 Units
•	2008 - 11 Units
•	2009 - 7 Units
•	Residential Housing Units

Future Land Use District	
■	Low Density Residential and Agricultural District
■	Shoreland District
■	Village Center District (Approximant Boundary)
■	Prime Agricultural Soils

Legend	
□	Parcels
Roads	
—	Class 2
—	Class 3
—	Class 4
—	Private Rds
—	Vermont State Highways
—	US Highways
—	Legal Trail
Preliminary NFIP 2009	
■	Special Flood Hazard Areas (Zone A)
■	Wetlands
■	Lakes/Ponds
—	Stream/River
—	Perennial Stream
—	Intermittent Stream



Data Sets:
 Surface Waters: VHD, VCGI 2008
 Roads: 1:5,000 VTrans Roads 2009
 Parcels: Cabot 2008, CVRPC
 Facilities: VT E911 2010
 Sewer and Water: CVRPC 2008
 Wetlands: VSWI - VTANR 2005
 Source Water Protection: VT ANR 2007
 Utility Lines: VCGI
 Culvert Locations - CVRPC 2006

Map Created 8/31/2010 by CVRPC
 N:/Towns/Cabot/Housing Resources_11x17.mxd

Data is only as accurate as the original sources.
 This map is for planning purposes only.
 This map may contain errors and omissions.

